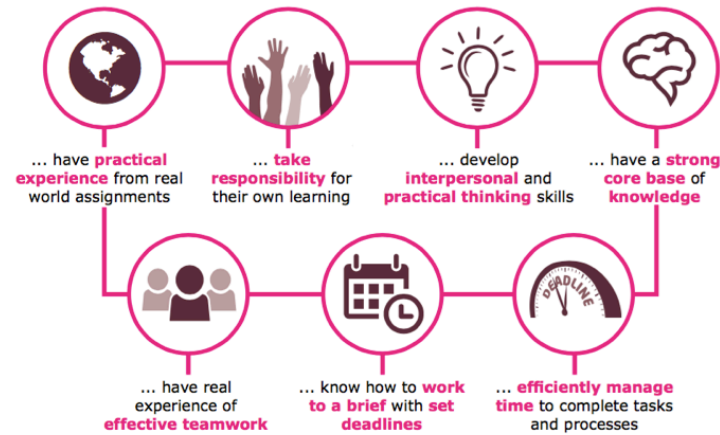


BTEC Business

Diploma (2 A-levels Equivalent)

BTEC Business Students...



The course is modular and different modules are studied and then assessed at regular intervals throughout the course.

Modules studied:

Year 12:

- Exploring Business
- Developing a Marketing Campaign
- Personal and Business Finance
- Recruitment and Selection
- Work Experience

Year 13:

- Managing an Event
- International Business
- Principles of Management
- One More Choice

Managing an Event (Year 13) is an exceedingly practical module where students will be responsible for the complete organisation and delivery of an event.

Types of Assessment:

There are three types of assessment;

- Tasks set and marked by your teachers, including reports, presentations and other tasks
- Tasks that are marked externally
- One written exam

The two A-Level equivalent diploma is completed in two years of study.

Studied in combination with one other A-level. This course is taught by two teachers with a total of 16 class periods a week, plus clinic time.

